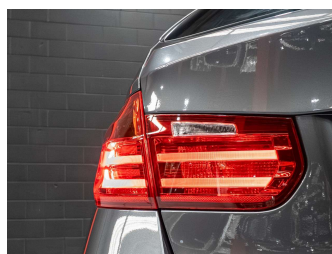


2015 BMW 320D Touring M-Sport



Purchase Price **\$23,980**

Includes GST
Excludes on-road costs of \$695

Indicative repayments


\$157.95 per week*

Based on a 48 month term & no deposit.
Total repayments (208) = \$32,853.41

Gain peace of mind with
Mechanical Breakdown Insurance. Ask us how.

Top features

- » ABS Braking
- » Adaptive Cruise Control
- » Air Conditioning
- » Alloy wheels
- » Auto Lights
- » Auto Rain Sensors
- » Auto Tailgate
- » Bluetooth
- » Body Kit (Factory)
- » Central Locking
- » Chain Driven
- » Child seat anchor points
- » Climate Control
- » Cruise Control
- » Cup holder
- » Electric Mirrors
- » Key-Less Entry
- » multifunctional steering wheel


Body Style	5 door, Station Wagon
Odometer	54,400 km
Engine	1995 cc, Petrol/Diesel
Fuel Type	Diesel
Transmission	Automatic, Rear Wheel
Wheels	-
VIN	WBA3K32010K402259
Interior	Black, Cloth
Safety	

Reg No.	-
Ext Colour	Grey
History	-
Seats	5 seats, Suede
CO2 Emissions	★★★★☆ 156 grams/km
Energy Economy	★★★★☆☆ Annual fuel cost of \$2,770 6.1L per 100km
Cost per year	is an estimate based on diesel price of \$2.00 per litre and an average distance of 14000 km. Includes Road User Charges (RUC). Emissions and Energy Economy figures standardised to 3P WLTP.
Stock ID:	5833

Based on 2025 UCSR rating for 12-19 models



Precision Autos | Phone 09 835 0599 | Email info@precisionautos.co.nz
46 Bruce McLaren Road, Henderson, Auckland 0612, New Zealand
www.precisionautos.co.nz

 ★★★★★
4.77 | 537 reviews

* Precision Autos is not a lender nor a financial adviser. Any amounts displayed should not be seen as an offer of finance or taken as financial advice. The interest rate, fees and loan term used in this calculation may not actually represent those available from lenders. Actual interest rates, fees and loan terms will vary per lender and are typically based on an assessment of your credit risk and responsible lending criteria. Any repayment amounts displayed are indicative only and have been calculated using several other indicative inputs. The interest rate used in this calculation is an arbitrary 13.95%, however exact interest rates vary per lender. The term of the loan used in this calculation is 48 months. Exact terms available vary per lender although options typically include 6, 12, 18, 24, 36, 48 and 60 months. This calculation also includes a typical mandatory fee charged by lenders. This is a one-off establishment fee of \$395.00. Typically, this fee can be paid upfront or, as in this calculation, be capitalised over the contract term, ie. included in the loan amount. This fee can vary per lender and other non-mandatory fees and charges may also apply. The total amount of repayments has been calculated by multiplying 208 weekly repayments (based on a 48 month term) by the weekly repayment amount of \$157.95 which equals \$32,853.41. This calculator does not consider any of your own personal circumstances and we strongly suggest you seek budgeting advice prior to committing to any loan contract. Responsible lending criteria and lender terms and conditions will likely apply to any finalised loan contract. Proof of security and/or vehicle insurance may also be required before proceeding.