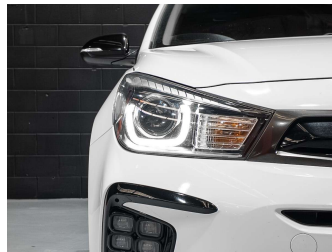


2018 Kia Rio GT-LINE 1.0PT/7AM



Purchase Price **\$19,980**
Includes GST, Registration & Licensing

Indicative repayments
\$128.37 per week*
Based on a 48 month term & no deposit.
Total repayments (208) = **\$26,700.77**

Gain peace of mind with
Mechanical Breakdown
Insurance. **Ask us how.**

Top features

- » 16 Valve
- » ABS Braking
- » ABS Braking w/ EBD
- » Air Conditioning
- » Alloy wheels
- » Android Auto
- » Apple CarPlay
- » Auto Lights
- » Auto Rain Sensors
- » Blind Spot information...
- » Bluetooth
- » Body Kit (Factory)
- » Central Locking
- » Chain Driven
- » Child seat anchor poin...
- » Climate Control
- » Collision avoidance sy...
- » Cruise Control

Body Style
5 door, Hatchback

Odometer
62,400 km

Engine
998 cc, Petrol/Diesel

Fuel Type
Petrol

Transmission
Automatic, Front Wheel

Wheels
-

VIN
KNADE511VK6241621

Interior
Black, Leather

Safety



Based on 2025 UCSR rating
for 16-23 models

Reg No.
LUH594

Ext Colour
White

History
NZ New, 2 owners

Seats
5 seats, leather/fabric

CO2 Emissions
★★★★☆
159 grams/km

Energy Economy
★★★★☆☆

**Annual fuel cost of \$2,350
6L per 100km**

Cost per year is an estimate based
on petrol price of \$2.80 per litre and
an average distance of 14000 km.
Emissions and Energy Economy
figures standardised to 3P WLTP.

Stock ID: 5948



Precision Autos | Phone 09 835 0599 | Email info@precisionautos.co.nz
46 Bruce McLaren Road, Henderson, Auckland 0612, New Zealand
www.precisionautos.co.nz

4.77 | 551 reviews

* Precision Autos is not a lender nor a financial adviser. Any amounts displayed should not be seen as an offer of finance or taken as financial advice. The interest rate, fees and loan term used in this calculation may not actually represent those available from lenders. Actual interest rates, fees and loan terms will vary per lender and are typically based on an assessment of your credit risk and responsible lending criteria. Any repayment amounts displayed are indicative only and have been calculated using several other indicative inputs. The interest rate used in this calculation is an arbitrary 13.95%, however exact interest rates vary per lender. The term of the loan used in this calculation is 48 months. Exact terms available vary per lender although options typically include 6, 12, 18, 24, 36, 48 and 60 months. This calculation also includes a typical mandatory fee charged by lenders. This is a one-off establishment fee of \$395.00. Typically, this fee can be paid upfront or, as in this calculation, be capitalised over the contract term, ie. included in the loan amount. This fee can vary per lender and other non-mandatory fees and charges may also apply. The total amount of repayments has been calculated by multiplying 208 weekly repayments (based on a 48 month term) by the weekly repayment amount of \$128.37 which equals \$26,700.77. This calculator does not consider any of your own personal circumstances and we strongly suggest you seek budgeting advice prior to committing to any loan contract. Responsible lending criteria and lender terms and conditions will likely apply to any finalised loan contract. Proof of security and/or vehicle insurance may also be required before proceeding.