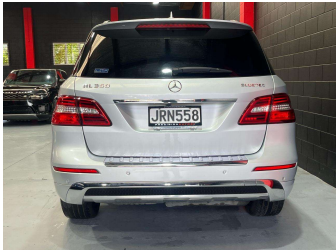


2012 Mercedes-Benz ML 350 AMG 4MATIC



Purchase Price

\$23,980

Includes GST, Registration & Licensing

Indicative repayments

\$153.57 per week*

Based on a 48 month term & no deposit.
Total repayments (208) = **\$31,942.64**

Gain peace of mind with
Mechanical Breakdown
Insurance. **Ask us how.**

Top features

- » 4WD
- » ABS Braking
- » Air Conditioning
- » Alloy wheels
- » Auto Lights
- » Auto Tailgate
- » Bluetooth
- » Body Kit (Factory)
- » Central Locking
- » Chain Driven
- » Climate Control
- » Cruise Control
- » Cruise Control
- » Cup holder
- » Electric Seat
- » Heated Seats
- » multifunctional steeri...
- » Multiple airbags

Body Style

5 door, SUV / 4x4

Odometer

138,100 km

Engine

2980 cc, Petrol/Diesel

Fuel Type

Diesel

Transmission

Automatic, 4WD

Wheels

-

VIN

WDC1660242A117542

Interior

Black, Leather

Safety

-

Reg No.

JRN558

Ext Colour

Silver

History

Ex-Overseas, 7 owners

Seats

5 seats, Leather

CO2 Emissions

-

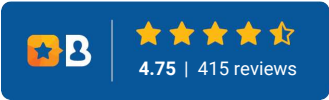
Energy Economy

-

Stock ID: 5579



Precision Autos | Phone 09 835 0599 | Email info@precisionautos.co.nz
46 Bruce McLaren Road, Henderson, Auckland 0612, New Zealand
www.precisionautos.co.nz



* Precision Autos is not a lender nor a financial adviser. Any amounts displayed should not be seen as an offer of finance or taken as financial advice. The interest rate, fees and loan term used in this calculation may not actually represent those available from lenders. Actual interest rates, fees and loan terms will vary per lender and are typically based on an assessment of your credit risk and responsible lending criteria. Any repayment amounts displayed are indicative only and have been calculated using several other indicative inputs. The interest rate used in this calculation is an arbitrary 13.95%, however exact interest rates vary per lender. The term of the loan used in this calculation is 48 months. Exact terms available vary per lender although options typically include 6, 12, 18, 24, 36, 48 and 60 months. This calculation also includes a typical mandatory fee charged by lenders. This is a one-off establishment fee of \$395.00. Typically, this fee can be paid upfront or, as in this calculation, be capitalised over the contract term, ie. included in the loan amount. This fee can vary per lender and other non-mandatory fees and charges may also apply. The total amount of repayments has been calculated by multiplying 208 weekly repayments (based on a 48 month term) by the weekly repayment amount of \$153.57 which equals \$31,942.64. This calculator does not consider any of your own personal circumstances and we strongly suggest you seek budgeting advice prior to committing to any loan contract. Responsible lending criteria and lender terms and conditions will likely apply to any finalised loan contract. Proof of security and/or vehicle insurance may also be required before proceeding.